

Welcome to Ridgeview!

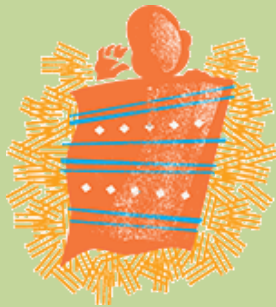
EDDIE FOOS | Lead Pastor



Our lead pastors, Eddie and Jamie Foos have a heart to reach our city and beyond with the life transforming message of Jesus. They believe in the next generation and value both the wisdom and guidance of those that have gone before us.

Truth Incarnate

The Almighty appeared on earth as a helpless human baby, needing to be fed and changed and taught to talk like any other child.



The more you think about it, the more staggering it gets. Nothing in fiction is so fantastic as this truth of the Incarnation.

—J.I. Packer

Important info for visitors:

For your convenience, we offer a fully staffed Nursery during service as well as a fun Kid's Church experience after the music.

We would love it if you took the time to fill out one of our **visitor cards**. They let us know who you are, what you think, or if you need prayer. They are located on the seatback in front of you.

Thanks for joining with us this morning!



1. Give online
2. Use the mobile app
3. Use the Card Reader



Visit our website for all kinds of great resources and info!
www.ridgeviewcc.com

RCC News and Events

Ladies Christmas Party

December 15th

"Joy for the Journey" is the theme. Please join the Ladies group at Lisa Belfils' home at 7pm on the 15th. Need a ride? Meet at RCC at 6:30 to carpool. Bring yourself, a friend, and a batch of your favorite Christmas cookies. See Lisa Belfils for more details.

Kids Church Christmas Party

December 17th

Don't miss our Kids Church Christmas Party next Sunday During the Sermon! Talk to Jamie Foos or Karin Jones for more details.

Ranger/Mpact Christmas Parties

December 20th

Royal Rangers and Mpact girls Christmas parties will be here on the 20th! See your Ranger Commander or Mpact Sponsor for details.

Christmas Eve Service

Join us for our Christmas Eve service from 6-7pm on the 24th. We won't be having a morning service that day, so please make plans to celebrate Christ's birth with us that night. We hope to see you there!

Wednesday Service Cancellation

December 27th

Wednesday night services will be cancelled on the last Wednesday of 2017. We hope you will enjoy some great family time instead. Services continue the following Wednesday the 3rd.

Metamorphic All Nighter

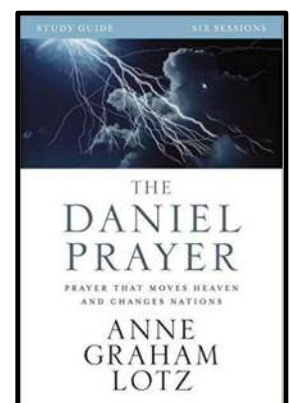
December 31st

Come ring in the New Year with us! The fun starts at 7pm and it doesn't end until the next day at 9am. Talk to Pastor Adam for more details.

Women's Bible Study Kickoff

January 11th at 7pm

They'll be using The Daniel Prayer Study Guide and will have sessions either Thursday evenings at 7pm or Friday mornings at 10am. See Lisa Belfils or Jamie Foos for more info.



Ridgeview Christian Center

This Week at RCC:

SUNDAY MORNING

- ❖ 8:30am – Cafe Mazi Open
- ❖ 9:15am – Sunday School (all ages)
- ❖ 10:15am – Morning Worship
- ❖ 10:45am – Kid's Church

SUNDAY AFTERNOON/EVENING

MONDAY

TUESDAY

WEDNESDAY

- ❖ 6:00pm – Dinner at the Connection Café
\$2.50 per person/\$10.00 for families 4+
Baked Potato Bar
- ❖ 7:00pm – Metamorphic (Youth)
- ❖ 7:00pm – Royal Rangers (Boys)
- ❖ 7:00pm – Girls Ministries (Mpac Girls)
- ❖ 7:00pm – Adult Bible Study

THURSDAY

FRIDAY

- ❖ 8:30am – Ladies Breakfast - Waffles Plus
- 7:00pm – Ladies Christmas Party

SATURDAY

RCC Ministry Leaders

Seniors – Rozanne Alban
Women's Ministry – Lisa Belfils
Annex (Young Adults) – Elyse Hill
Metamorphic (Youth) – Pastor Adam Snodgrass
Children's Coordinator – Karin Jones
Preschool – Darla Donaldson
Royal Rangers (Boys) – Jim Turk
Girls Ministries – Martha Dyer
Nursery – Erikka Strobel
Media – Ron Greer
Sound – Nate Dunlap



Have a Question? Need some advice? Just wanna hang out?

CALL PASTOR EDDIE. WE'LL GET TOGETHER FOR COFFEE AND CHAT: 509-326-2913

An Unexpected Christmas #2:

An Unlikely Candidate & Labels



INTRODUCTION

You might think the Bible is filled with good, godly people. And it is. But these people have their fair share of dark secrets and shadowy pasts. Judah is no exception. He's a little shady—no, he's a lot shady. So why in the world would God decide to include him in Jesus' ancestry?

Some labels stand the test of time: Conan the Barbarian, John the Baptist. Your nickname in grade school? Probably not. Some labels are honoring: Alexander the Great. Others aren't as flattering: Rahab the Harlot. But is God able to do something through us regardless of what our labels, our pasts, or our reputations might suggest? Absolutely!

DISCUSSION QUESTIONS

1. What do you do with your darkest secrets? Do you have a form of confession or do you keep them hidden in fear of being found out?
2. Read Genesis 38. Why would a person like Judah be included in Jesus' genealogy?
3. Is it possible to ever escape the reach of God's grace? What areas of your life do you need to bring out from the shadows in order to experience God's forgiveness?
4. In Joshua 6, the Israelites conquer Jericho and Rahab is protected. In what ways do you connect with Rahab's circumstances?
5. Given Rahab's label, why is it so remarkable for her to be included in Jesus' ancestry?

MOVING FORWARD

On the one hand, Rahab does not deserve to be in Jesus' ancestry. Her reputation is questionable. Her profession is condemnable. She has no platform of personal righteousness. But her past is no match for God's grace. While her lifestyle should have brought judgment, her faith brought forgiveness. And God ended up using her life in his larger story.

Rahab's life reminds us of who we are and what we need—a savior from our sin. And the incredible news is, we are relentlessly invited into a relationship with the only one who can do anything about it—Jesus.

CHANGING YOUR MIND

But Joshua spared Rahab the prostitute, with her family and all who belonged to her, because she hid the men Joshua had sent as spies to Jericho—and she lives among the Israelites to this day. -Joshua 6:25

Ridgeview Christian Center

5610 N. Ash St, Spokane, Washington 99205
Phone: 509-326-2913

Office Hours: M – TH 9AM to 4PM

E-MAIL: office@ridgeviewcc.com

FACEBOOK: [rccchurchspokane](https://www.facebook.com/rccchurchspokane)

Wifi: RCCFamily – Wifi PASSWORD: JesusLovesMe!



Prayer Chain – Call or Text
(509) 859-7565

Please leave a short, detailed message, plus your name/number.